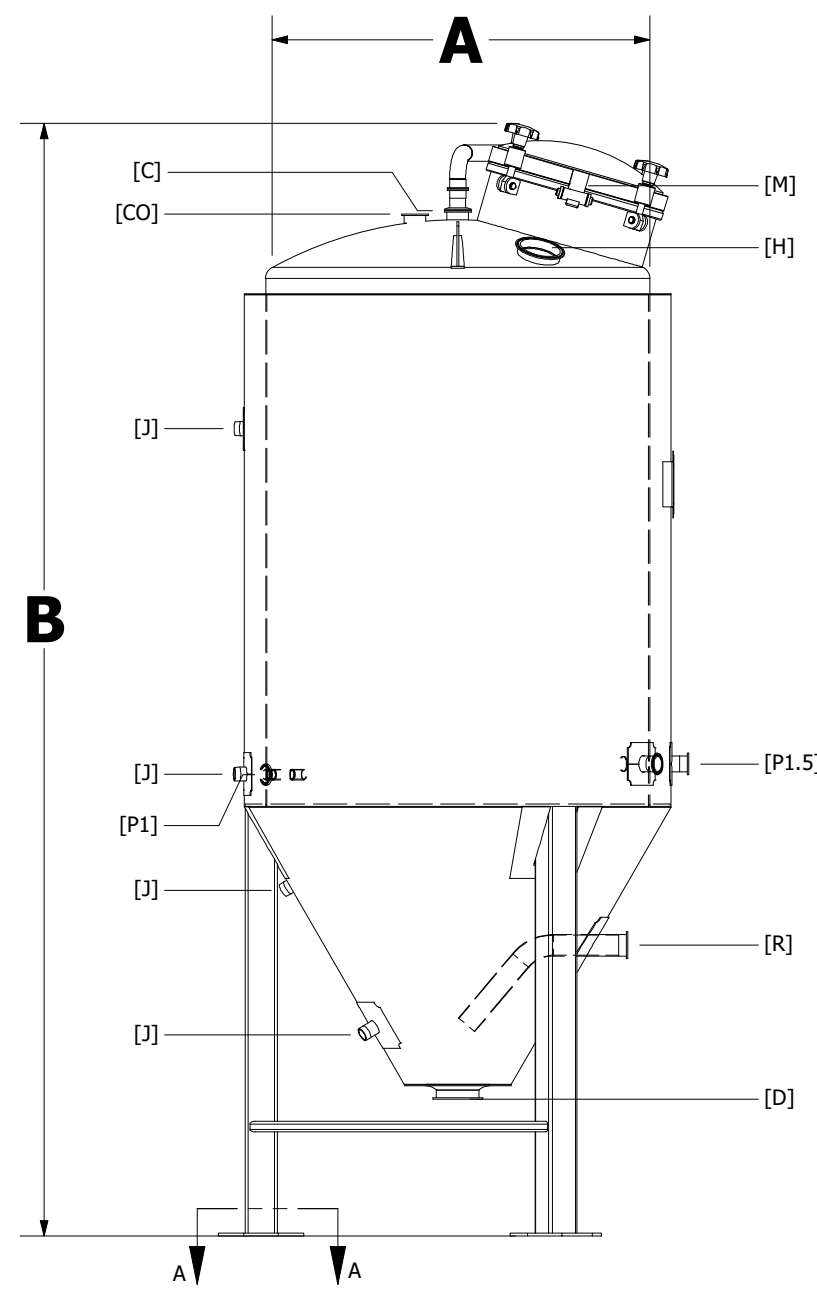
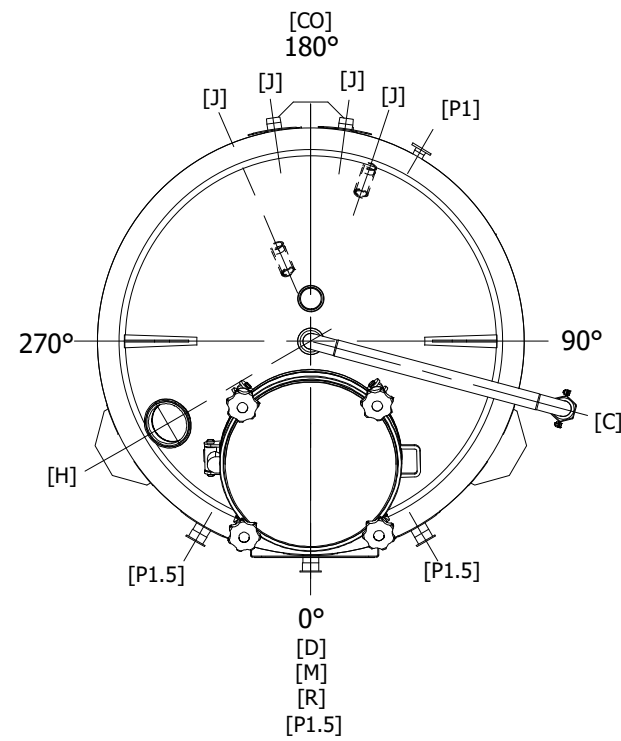
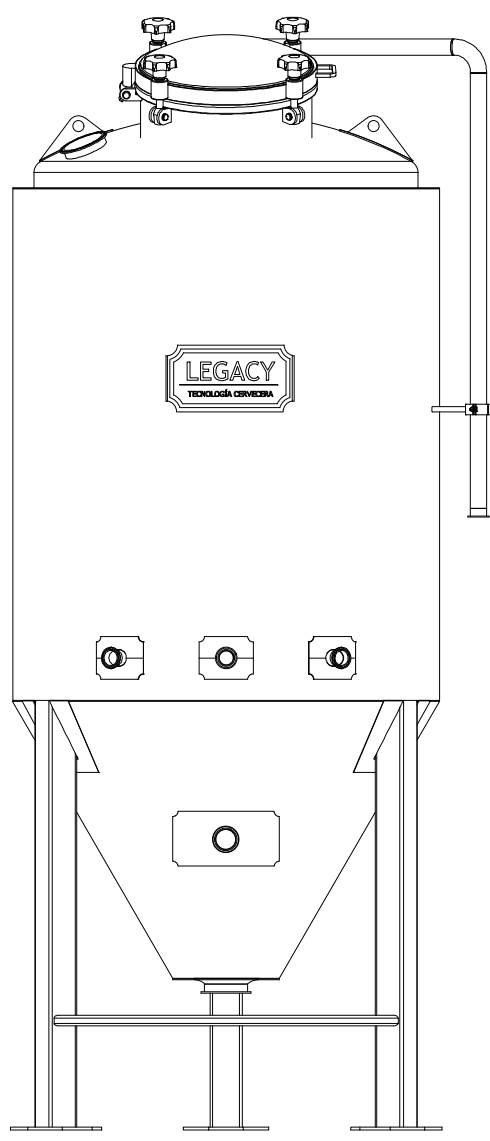
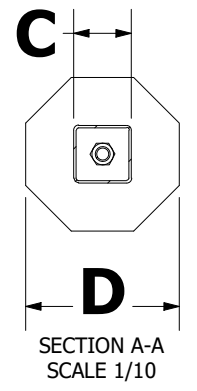


PROPRIETARY AND CONFIDENTIAL
 THE INFORMATION CONTAINED IN THIS DRAWING IS THE SOLE PROPERTY OF MARKS DESIGN AND METALWORKS, LLC. ANY REPRODUCTION IN PART OR AS A WHOLE WITHOUT THE WRITTEN PERMISSION OF MARKS DESIGN AND METALWORKS, LLC IS PROHIBITED.



NOTES:
 1. TANK SHOWN IS 7 BBL.



DIMENSIONS								
BBL	MAX VOL (BBL)	A	B	C	D	WEIGHT (EMPTY)	WEIGHT (WORKING)	WEIGHT (FULL)
3	3.75	32"	85-5/16"	3"	8"	577 LBS	1,365 LBS	1,563 LBS
5	6.25	36"	90-3/4"	3"	8"	659 LBS	1,973 LBS	2,300 LBS
7	8.75	36"	102-1/4"	3"	8"	760 LBS	2,600 LBS	3,060 LBS
10	12.5	44"	109-1/8"	3"	8"	933 LBS	3,560 LBS	4,217 LBS

REVISION HISTORY				
REV	DESCRIPTION	DATE	REV ID	APPROVED
A	LEGACY STANDARD	04/08/2022	D.G.	
B	ADDED THERMOWELL PORT	4/20/2022	D.G.	

ADDITIONAL COMPATIBLE PARTS
 1. MANWAY GASKET: M21P011

NOZZLE SCHEDULE							
IDENTIFIER	SERVICE	QTY	LOCATION	NECK SIZE	NECK TYPE	CONNECTION SIZE	CONNECTION TYPE
C	CIP	1	TOP HEAD	2"	TUBE	1-1/2"	TC
CO	CO2	1	TOP HEAD	1-1/2"	TUBE	1-1/2"	TC
D	DRAIN	1	BOTTOM CONE	4"	TUBE	4"	TC
H	DRY HOP	1	TOP HEAD	4"	TUBE	4"	TC
J	GLYCOL	4	JACKETS	1"	PIPE	1"	MNPT
M	MANWAY	1	SHELL SIDEWALL	21" X 17"	OVAL	N/A	N/A
R	RACKING ARM	1	SHELL CONE	2"	TUBE	2"	TC
P1.5	1-1/2" PORT	3	SHELL SIDEWALL	1-1/2"	TUBE	1-1/2"	TC
P1	1" PORT	1	SHELL SIDEWALL	1"	TUBE	1"	TC

REVISION APPROVED: **B** SIZE APPROVED: _____ BBL
 CUSTOMER SIGNATURE: _____ DATE: _____

UNLESS OTHERWISE SPECIFIED:		NAME	DATE		
DIMENSIONS ARE IN INCHES		AUTHOR	D. GUTHRIE		
TOLERANCES		CHECKED			
Fractional: 1/8" Angular: ±1° Bend ±2° 1 Decimal (x): ±0.1" 2 Decimal (.0x): ±0.03" 3 Decimal (.00x): ±0.005"		ENG APPR.			
MACHINE FINISH		MFG APPR.		TITLE: LEGACY FV SERIES	
PROJECTION		Q.A.		S/N#	
MATERIAL:		COMMENTS: 1. JACKET MAX PRESSURE: 14.9 PSI 2. JACKET TEST PRESSURE: 20 PSI 3. TANK MAX PRESSURE: 14.9 PSI		DSC. 3 BBL - 10 BBL	
FINISH:				DWG.	SIZE B
DO NOT SCALE DRAWING				SCALE:	REV B
				WEIGHT:	
				SHEET 1 of 1	